

 **BOEING**  
COMPONENT  
MAINTENANCE MANUAL

TO: ALL HOLDERS OF ESCAPE SLIDE GIRT BAR ASSEMBLY COMPONENT MAINTENANCE  
MANUAL 25-66-12.

REVISION NO. 2 DATED MAR 01/98

HIGHLIGHTS

Pages which have been added or revised are outlined below together with the highlights of the revision. Remove and insert the affected pages as listed and enter Revision No. and date on the Record of Revision Sheet.

CHAPTER/SECTION

AND PAGE NO.

DESCRIPTION OF CHANGE

TITLE PAGE

Added clarification to details.

1

DESCRIPTION & OPERATION

1

501

REPAIR-GEN

601

REPAIR 1-1

601

1002,1005

1002,1005

Added girt bar assemblies 416T2008-5, -6, without the cable.

1005

Identified cable (17) details.

1005

Changed rivet (5) part number callout.

**25-66-12**

HIGHLIGHTS

01.1

Page 1

Mar 01/98

# ESCAPE SLIDE GIRT BAR ASSEMBLY

PART NUMBER 416T2008-4,-5,-6

COMPONENT MAINTENANCE MANUAL  
WITH  
ILLUSTRATED PARTS LIST

**25-66-12**

TITLE PAGE

Page 1

Mar 01/98

01.1



REVISION RECORD

- Retain this record in front of manual. On receipt of revision, insert revised pages in the manual, and enter revision number, date inserted and initial.

REVISION NUMBER	REVISION DATE	DATE FILED	BY	REVISION NUMBER	REVISION DATE	DATE FILED	BY



TEMPORARY REVISION AND SERVICE BULLETIN RECORD

BOEING SERVICE BULLETIN	BOEING TEMPORARY REVISION	OTHER DIRECTIVE	DATE OF INCORPORATION INTO MANUAL
		PRR B10122 PRR B10642	APR 01/91 APR 01/91

**25-66-12**

TR & SB RECORD

01

Page 1

Apr 01/91


**BOEING**  
 COMPONENT  
 MAINTENANCE MANUAL

PAGE	DATE	CODE	PAGE	DATE	CODE
25-66-12			ILLUSTRATED PARTS LIST		
			1001	APR 01/91	01
			*1002	MAR 01/98	01.1
TITLE PAGE			1003	BLANK	
*1	MAR 01/98	01.1	1004	APR 01/91	01
2	BLANK		*1005	MAR 01/98	01.1
			1006	BLANK	
REVISION RECORD					
1	APR 01/91	01			
2	BLANK				
TR & SB RECORD					
1	APR 01/91	01			
2	BLANK				
LIST OF EFFECTIVE PAGES					
*1	MAR 01/98	01			
THRU LAST PAGE					
CONTENTS					
1	APR 01/91	01			
2	BLANK				
INTRODUCTION					
1	APR 01/91	01			
2	BLANK				
DESCRIPTION & OPERATION					
*1	MAR 01/98	01.1			
2	BLANK				
CHECK					
*501	MAR 01/98	01.1			
502	BLANK				
REPAIR-GENERAL					
*601	MAR 01/98	01.1			
602	BLANK				
REPAIR 1-1					
*601	MAR 01/98	01.1			
602	APR 01/91	01			

\* = REVISED, ADDED OR DELETED

# 25-66-12

EFFECTIVE PAGES  
 LAST PAGE Page 1  
 01 Mar 01/98



TABLE OF CONTENTS

<u>Paragraph Title</u>	<u>Page</u>
Description and Operation . . . . .	1
Testing and Trouble Shooting (not applicable)	
Disassembly (not applicable)	
Cleaning (not applicable)	
Check . . . . .	501
Repair. . . . .	601
Assembly (not applicable)	
Fits and Clearances (not applicable)	
Special Tools (not applicable)	
Illustrated Parts List. . . . .	1001

25-66-12



## INTRODUCTION

The instructions in this manual provide the information necessary to perform maintenance functions ranging from simple checks and replacement to complete shop-type repair.

This manual is divided into separate sections:

- |  |                              |
|--|------------------------------|
| 1. Title Page                                      | 4. List of Effective Pages   |
| 2. Record of Revisions                             | 5. Table of Contents         |
| 3. Temporary Revision &<br>Service Bulletin Record | 6. Introduction              |
|  | 7. Procedures & IPL Sections |

Refer to the Table of Contents for the page location of applicable sections. An asterisked flagnote \*[ ] in place of the page number indicates that no special instructions are provided since the function can be performed using standard industry practices.

The beginning of the REPAIR section includes a list of the separate repairs, and list of applicable standard Boeing practices.

An explanation of the use of the Illustrated Parts List is provided in the Introduction to that section.

All weights and measurements used in the manual are in English units, unless otherwise stated. When metric equivalents are given they will be in parentheses following the English units.

Design changes, optional parts, configuration differences and Service Bulletin modifications create alternate part numbers. These are identified in the Illustrated Parts List (IPL) by adding an alphabetical character to the basic item number. The resulting item number is called an alpha-variant. Throughout the manual, IPL basic item number references also apply to alpha-variants unless otherwise indicated.

# 25-66-12

INTRODUCTION

01

Page 1

Apr 01/91

ESCAPE SLIDE GIRT BAR ASSEMBLYDESCRIPTION AND OPERATION

1. The girt bar assembly includes a welded tube and end fitting and could have an attached cable.
2. The girt bar assembly is a part of the escape slide-raft deployment system. The girt bar is installed through a loop in the slide girt and is locked into the girt bar carrier. The girt bar carrier is attached to the escape slide pack and stays with the door as the door is opened and closed. During slide deployment, the girt bar carrier locks into floor fittings, and the girt bar becomes the structural tie between the airplane and the escape slide.
3. Leading Particulars (approximate)

Length -- 30 inches

Height -- 2 inches

Width -- 1 inch

**25-66-12**

DESCRIPTION &amp; OPERATION

01.1

Page 1

Mar 01/98





CHECK

- | 1. Penetrant examine the welded tube and fitting end unit per SOPM 20-20-02.
- | 2. Replace the cables if they have broken strands.
- | 3. If applicable, do a cable proof test.
  - | A. Hang one end of the girt bar at the swaged ball of one cable.
  - | B. Apply a 230-255 pound load on the swaged ball in the cable at the other end of the girt bar.
  - | C. The cables must not come apart.

25-66-12

CHECK

01.1

Page 501

Mar 01/98



REPAIR – GENERAL

1. Content

- A. Repair, refinish and replacement procedures are included in separate repair sections as follows:

<u>P/N</u>	<u>NAME</u>	<u>REPAIR</u>
BACC2A2C00068HH	CABLE ASSY	1-1

2. Standard Practices

- A. Refer to these standard practices, as applicable, for details of the procedures in each repair.

20-50-16 Assembly of Swaged Cables

**25-66-12**

REPAIR-GENERAL

01.1

Page 601

Mar 01/98



CABLE ASSEMBLY – REPAIR 1-1

BACC2A2C00068HH

**NOTE:** Refer to REPAIR-GEN for a list of applicable standard practices.

1. Cable Assembly Replacement (Fig. 601 and 602)

- A. Push the terminal end (20) out of the fitting end (25).
- B. Cut the cable (17) of the cable assembly (15) and pull the pieces out.
- C. If necessary, remove rivet (5) and retainers (10) to give clearance when terminal end cannot move freely.
- D. Install a replacement cable (17) and push through the tapered hole in the fitting end (25).
- E. Install terminal ends (20) in the ends of the cable (17) and swage them on by the procedure of SOPM 20-50-16.

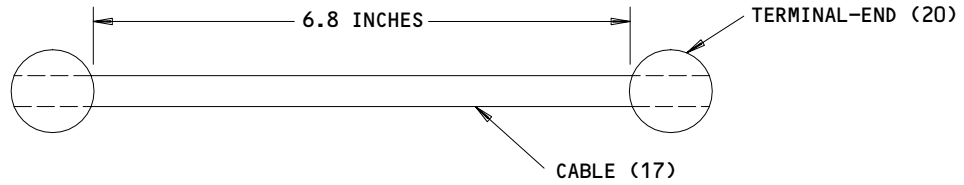
**25-66-12**

REPAIR 1-1

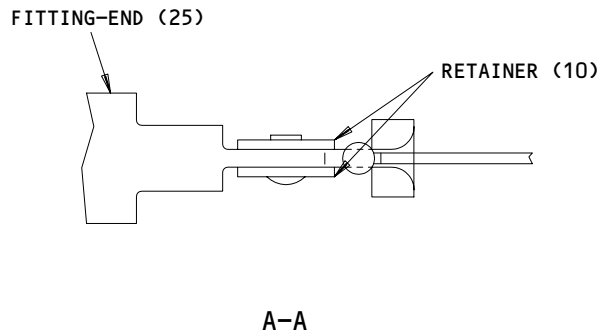
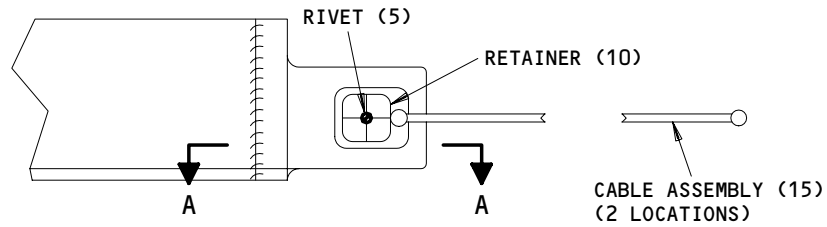
01.1

Page 601

Mar 01/98



Cable Assembly  
Figure 601



Cable Assembly Replacement  
Figure 602

**25-66-12**

REPAIR 1-1

Page 602

Apr 01/91

01

ILLUSTRATED PARTS LIST

1. This section lists and illustrates replaceable or repairable component parts. The Illustrated Parts Catalog contains a complete explanation of the Boeing part numbering system.

2. Indentures show parts relationships as follows:

Assembly

Detail Parts for Assembly

Subassembly

Attaching Parts for Subassembly

Detail Parts for Subassembly

Detail Installation Parts (Included only if installation parts may be returned to shop as part of assembly)

3. One use code letter (A, B, C, etc.) is assigned in the EFF CODE column for each variation of top assembly. All listed parts are used on all top assemblies except when limitations are shown by use code letter opposite individual part entries.

4. Letter suffixes (alpha-variants) are added to item numbers for optional parts, Service Bulletin modification parts, configuration differences (Except left- and right-hand parts), product improvement parts, and parts added between two sequential item numbers. The alpha-variant is not shown on illustrations when appearance and location of all variants of the part is the same.

5. Service Bulletin modifications are shown by the notations PRE SB XXXX and POST SB XXXX.

A. When a new top assembly part number is assigned by Service Bulletin, the notations appear at the top assembly level only. The configuration differences at detail part level are then shown by use code letter.

B. When the top assembly part number is not changed by the Service Bulletin, the notations appear at the detail part level.

6. Parts Interchangeability

Optional  
(OPT)

The parts are optional to and interchangeable with other parts having the same item number.

Supersedes, Superseded By  
(SUPSDS, SUPSD BY)

The part supersedes and is not interchangeable with the original part.

Replaces, Replaced By  
(REPLS, REPLD BY)

The part replaces and is interchangeable with, or is an alternate to, the original part.

**25-66-12**

ILLUSTRATED PARTS LIST

01

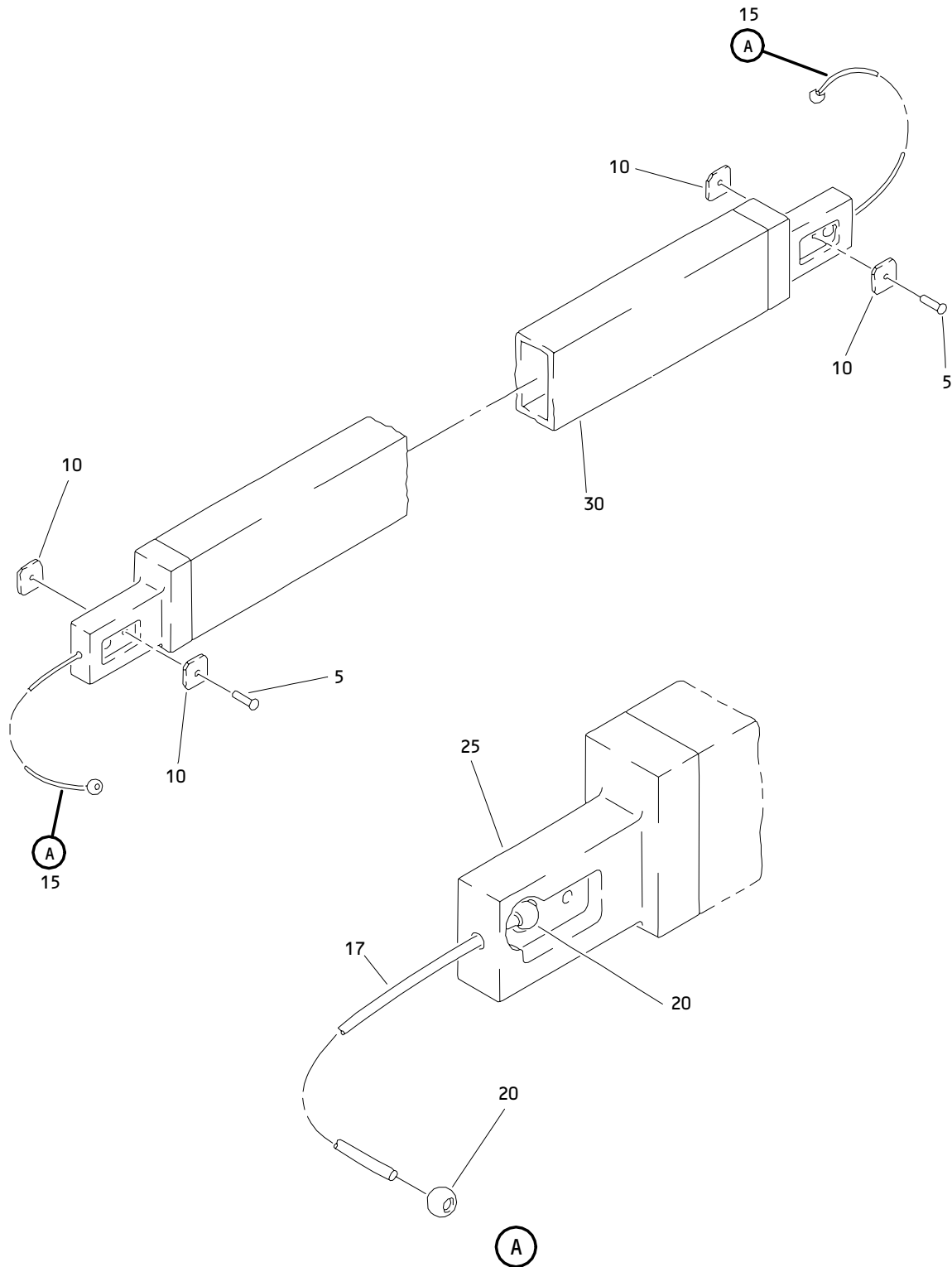
Page 1001

Apr 01/91

PART NUMBER	AIRLINE PART NO.	FIG.	ITEM	TTL REQ
BACC2A2C00068HH		1	15	2
BACT14B		1	20	2
CABLE		1	17	1
MS20615-3M6		1	5	2
416T2008-2		1	10	4
416T2008-4		1	1	RF
416T2008-5		1	1A	RF
416T2008-6		1	1B	RF
416T2295-2		1	25	2
416T2295-3		1	25A	2
416T2301-4		1	30	1
416T2301-5		1	30A	1

# 25-66-12

 ILLUSTRATED PARTS LIST  
 01.1 Page 1002  
 Mar 01/98



Escape Slide/Girt Bar Assembly  
 Figure 1

**25-66-12**

ILLUSTRATED PARTS LIST  
 01 Page 1004  
 Apr 01/91


**BOEING**  
 COMPONENT  
 MAINTENANCE MANUAL

FIG. & ITEM	PART NO.	AIRLINE PART NUMBER	NOMENCLATURE 1234567	EFF CODE	QTY PER ASSY
01-					
-1	416T2008-4		GIRT BAR ASSY-ESCAPE SLIDE	A	RF
-1A	416T2008-5		GIRT BAR ASSY-ESCAPE SLIDE	B	RF
-1B	416T2008-6		GIRT BAR ASSY-ESCAPE SLIDE	C	RF
5	MS20615-3M6		.RIVET	A	2
10	416T2008-2		.RETAINER	A	4
15	BACC2A2C00068HH		.CABLE ASSY	A	2
17	CABLE		..CABLE (MIL-W-83420, TYPE 1, COMPOSITION A, ZINC, 7x7, 1/16 INCH DIA)		1
20	BACT14B		..TERMINAL END		2
25	416T2295-2		.FITTING END	A	2
-25A	416T2295-3		.FITTING END	C	2
30	416T2301-4		.TUBE	AB	1
-30A	416T2301-5		.TUBE	BC	1

25-66-12

 ILLUSTRATED PARTS LIST  
 01.1 Page 1005  
 Mar 01/98